



7 Series
Centerline Adjustable Latch Entry Fail Locked / Fail Unlocked

In or Out...we make it Easy!®



Features & Benefits

- Accommodates 5/8" latch projection (pullman design not included)
- Unique anti-vibration design prevents manipulation by vibration
- Enlarged latch cavity width allows compatibility with cylindrical, narrowline aluminum and centerline mortise locks (including 3-piece anti-friction type)
- 1-1/2" cut-out depth accommodates most aluminum and wood frames
- Use with wide range of door thicknesses (1-3/8" to 2-3/8")
- AC/DC input acceptable for fail locked models. Fail unlocked mode requires DC
- Non-Handed
- Standard mounting tabs, fasteners, and trim plate included

Applications

- Commercial Centers
- Industrial Buildings
- Educational Facilities
- Retail Outlets
- Health Care Facilities
- Office Complexes

7 Series

RCI's 7 Series electric strikes allow installers to adjust the strike pivot horizontally for precise alignment.

Unique anti-vibration design prevents manipulation by vibration.

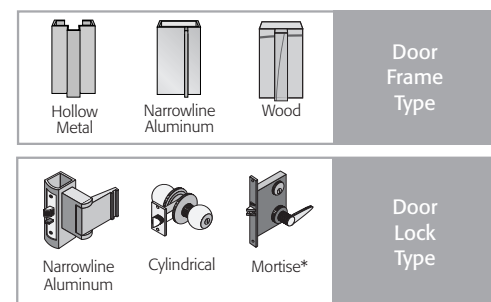
Crossed wires are never a problem, as the coil is non polarity-conscious.

Highlights

- 1/8" Horizontal adjustment
- UL 1034 burglary-resistant
- Non-Handed
- Modular design
- Stainless steel faceplate (standard finish - 32D)
- 3-year limited warranty

Accessories

- BXES2**.....Weldable Box
(7104/7304 & 7114/7314 Only)
- 47HK9**.....Standard strike mounting hardware kit
- 4/7JIG**.....Frame Prep Jig
- 930-LG**.....Standard Profile Latch Guard
- LEK**.....Lip extension kit for retrofit (specify 1", 2" or 3")
- MSK10**.....1/16" mounting spacer for added latch depth (up to 11/16")
- MSK11**.....1/8" mounting spacer for added latch depth (up to 3/4"). Specify this spacer for use with mortise locks.
- SMT-01**.....Strike Marking Template Kit
- TP47-5PK**.....4/7 Series Trim Plate - 5 pk
(Not Available for 7119, 7319 Models)



Options

3, 4, 10, 10B, 32 Special Finishes

Specifications

7114, 7104, 7105

7314, 7304, 7305

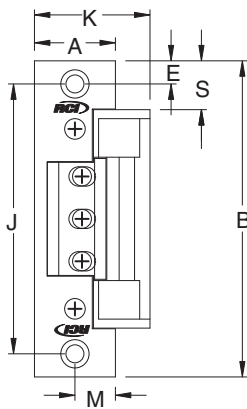


In or Out...we make it Easy!®



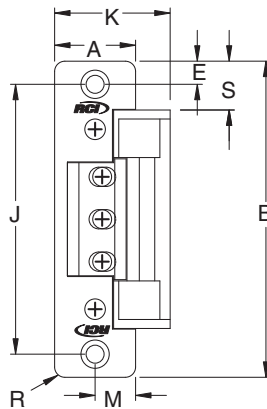
7114/7314

1-1/4"W x 4-7/8"H ANSI
(31.75 x 123.83mm)
Hollow Metal



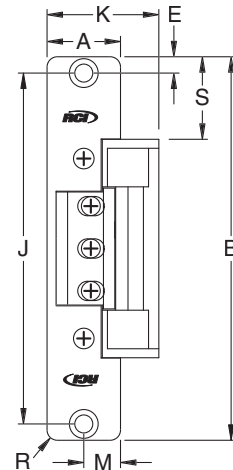
7104/7304

1-1/4"W x 4-7/8"H ANSI
(31.75 x 123.83mm)
Aluminum



7105/7305

1-1/8"W x 5-7/8"H
(28.58 x 149.23mm)
Aluminum or Wood



| PROFILE MEASUREMENT | 71/7314 INCHES | 71/7314 DECIMAL | 71/7314 METRIC (mm) | 71/7304 INCHES | 71/7304 DECIMAL | 71/7304 METRIC (mm) | 71/7305 INCHES | 71/7305 DECIMAL | 71/7305 METRIC (mm) |
|---------------------|----------------|-----------------|---------------------|----------------|-----------------|---------------------|----------------|-----------------|---------------------|
| A | 1-1/4 | 1.25 | 31.75 | 1-1/4 | 1.25 | 31.75 | 1-1/8 | 1.125 | 28.58 |
| B | 4-7/8 | 4.875 | 123.83 | 4-7/8 | 4.875 | 123.83 | 5-7/8 | 5.875 | 149.23 |
| E | 3/8 | 0.375 | 9.53 | 3/8 | 0.375 | 9.53 | 1/4 | 0.25 | 6.35 |
| J | 4-1/8 | 4.125 | 104.78 | 4-1/8 | 4.125 | 104.78 | 5-3/8 | 5.375 | 136.53 |
| K | 1-3/4 | 1.750 | 44.45 | 1-3/4 | 1.750 | 44.45 | 1-11/16 | 1.688 | 42.86 |
| M | 5/8 | 0.625 | 15.88 | 5/8 | 0.625 | 15.88 | 9/16 | 0.563 | 14.29 |
| R | — | — | — | 5/32 | 0.156 | 3.97 | 5/32 | 0.156 | 3.97 |
| S | 3/4 | 0.75 | 19.05 | 3/4 | 0.75 | 19.05 | 1-1/4 | 1.25 | 31.75 |

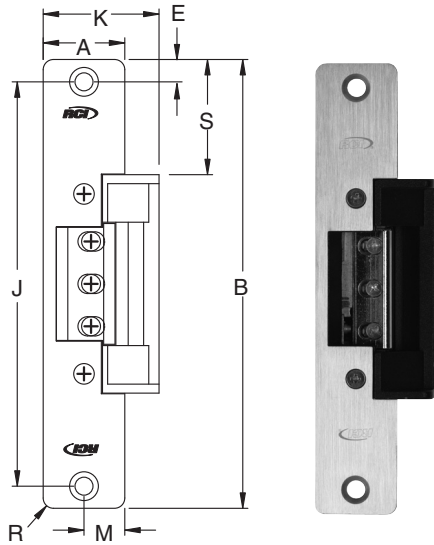
Specifications

7107, 7108, 7119

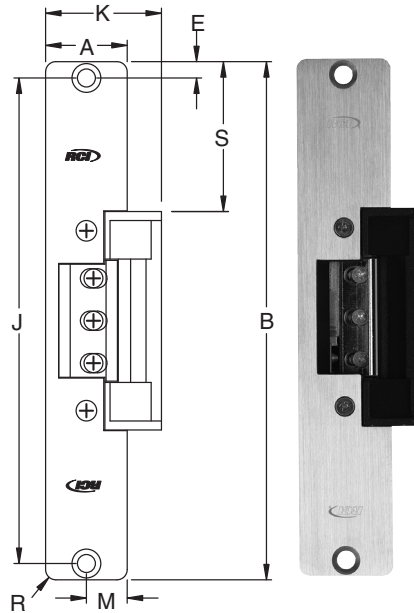
7307, 7308, 7319



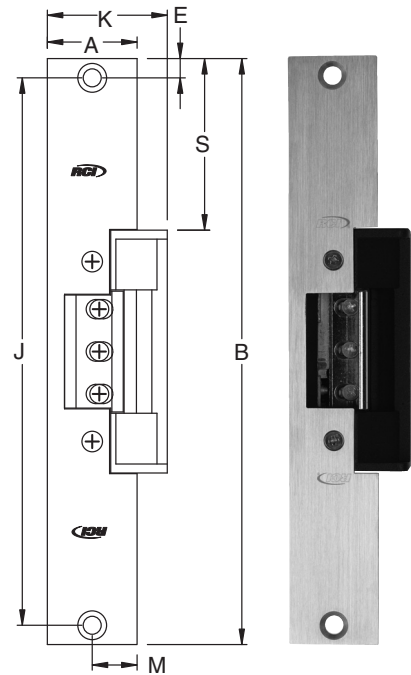
In or Out...we make it Easy!®



7107/7307
 1-1/4"W x 6-7/8"H
 (31.75 x 174.63mm)
 Aluminum or Wood



7108/7308
 1-7/16"W x 7-15/16"H
 (36.51 x 201.61mm)
 Aluminum or Wood



7119/7319
 1-3/8"W x 9"H
 (34.93 x 228.60mm)
 Hollow Metal or Wood

| PROFILE MEASUREMENT | 71/7307 INCHES | 71/7307 DECIMAL | 71/7307 METRIC (mm) | 71/7308 INCHES | 71/7308 DECIMAL | 71/7308 METRIC (mm) | 71/7319 INCHES | 71/7319 DECIMAL | 71/7319 METRIC (mm) |
|---------------------|----------------|-----------------|---------------------|----------------|-----------------|---------------------|----------------|-----------------|---------------------|
| A | 1-1/4 | 1.25 | 31.75 | 1-7/16 | 1.438 | 36.51 | 1-3/8 | 1.375 | 34.93 |
| B | 6-7/8 | 6.875 | 174.63 | 7-15/16 | 7.938 | 201.61 | 9 | 9.00 | 228.60 |
| E | 3/8 | 0.375 | 9.53 | 1/4 | 0.250 | 6.35 | 5/16 | 0.312 | 7.94 |
| J | 6-1/8 | 6.125 | 155.58 | 7-7/16 | 7.438 | 188.91 | 8-3/8 | 8.375 | 212.73 |
| K | 1-3/4 | 1.750 | 44.50 | 1-3/4 | 1.750 | 44.45 | 1-53/64 | 1.828 | 46.43 |
| M | 5/8 | 0.625 | 15.88 | 23/32 | 0.719 | 18.26 | 11/16 | 0.688 | 17.46 |
| R | 5/32 | 0.156 | 3.97 | 5/32 | 0.156 | 3.97 | - | - | - |
| S | 1-3/4 | 1.75 | 44.45 | 2-9/32 | 2.281 | 57.94 | 2-5/8 | 2.625 | 66.68 |



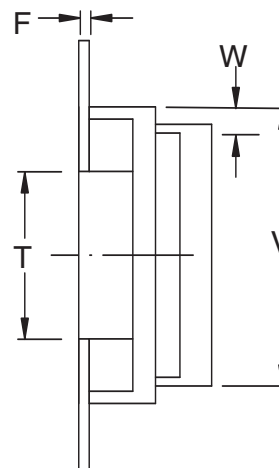
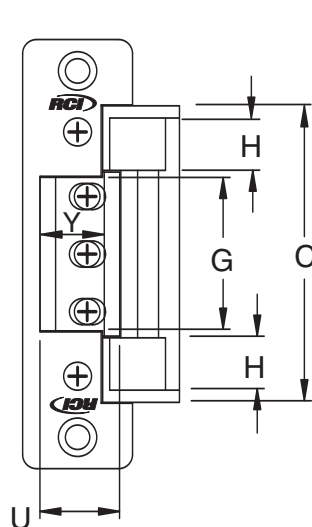
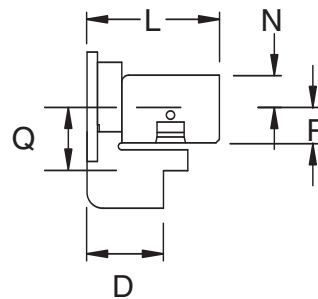
In or Out...we make it Easy!®

| Model(s) | Mode | Voltage | Current | Duty | Sound | Amps [*] | Ohms [†] |
|----------|---------------|---------|---------|--------------|--------|-------------------|-------------------|
| 71XX-01 | Fail Locked | 11-16V | AC | Intermittent | Buzz | 0.35/0.55 | 22.5 |
| 71XX-05D | Fail Locked | 12V | DC | Continuous | Silent | 0.28 | 43 |
| 71XX-07 | Fail Locked | 24V | AC | Intermittent | Buzz | 0.50 | 41 |
| 71XX-08D | Fail Locked | 24V | DC | Continuous | Silent | 0.15 | 170 |
| 73XX-06 | Fail Unlocked | 12V | DC | Continuous | Silent | 0.24 | 51 |
| 73XX-09 | Fail Unlocked | 24V | DC | Continuous | Silent | 0.15 | 160 |

NOTE: XX = Faceplate Code. Intermittent Duty = Energized less than 1 min. Continuous Duty = Energized 1 min. or more. Duty Ratio 1:5. *Ratings are based on maximum current draw at +10°C and include initial power-up current draw. †Nominal resistance at +25°C ± 7% tolerance.

| Profiles | | | | | | | | | | | | | | |
|-------------------|-------|-------|-------|-------|-------|-------|-------|-------|-------|-------|-------|-------|-------|-------|
| MEASUREMENT | C | D | F | G | H | L | N | P | Q | T | U | V | W | Y |
| FRACTIONAL INCHES | 3-3/8 | 7/8 | 1/8 | 1-3/4 | 9/16 | 1-1/2 | 3/8 | 1/2 | 3/4 | 1-7/8 | 1 | 3 | 5/16 | 7/8 |
| DECIMAL INCHES | 3.375 | 0.875 | 0.125 | 1.750 | 0.563 | 1.50 | 0.375 | 0.500 | 0.750 | 1.875 | 1.00 | 3.00 | 0.313 | 0.875 |
| METRIC mm | 85.73 | 22.23 | 3.18 | 44.45 | 14.29 | 38.10 | 9.53 | 12.70 | 19.05 | 47.63 | 25.40 | 76.20 | 7.95 | 22.20 |

NOTE: Dimensions shown below with 04 faceplate. Dimensions for U and Y will vary ± 1/16" with horizontal adjustment.



NOTE: Not to scale. Specifications are subject to change without notice.

RCI also offers a complete line of Electromagnetic Locks, Electric Locks, Switches, Power Supplies, Keypads & Readers, Exit Devices, Systems & Door Hardware